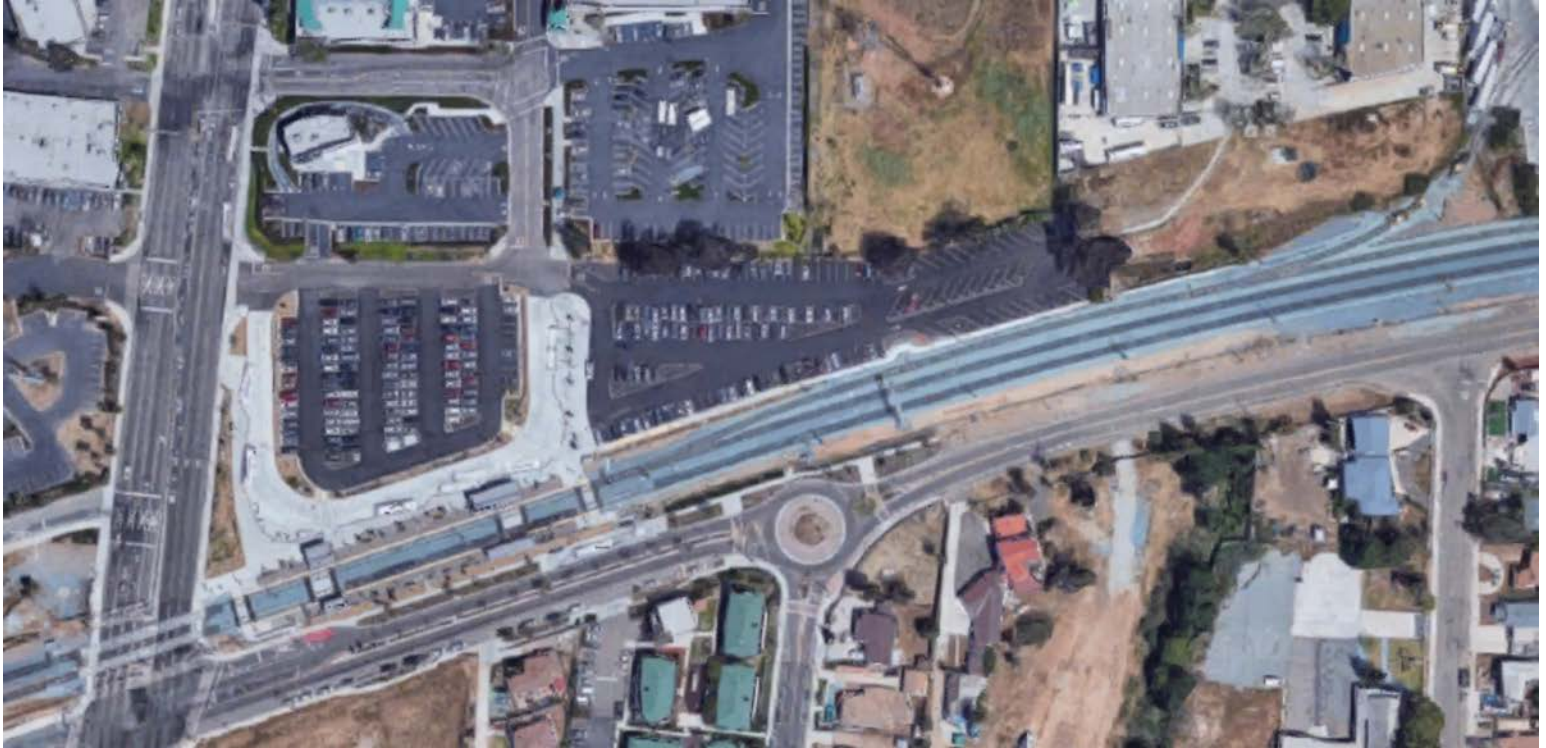




Palomar Street Trolley Station

1265 Industrial Ave., Chula Vista, CA 91911



NOT AVAILABLE - Under Negotiation

Site Information

Jurisdiction: City of Chula Vista

APN: 622-081-27, 28

Acreage: 5.0 acres

Transit: Light Rail, Bus

Current Use: Station Parking

Land Use Designation: MU-1 Palomar Gateway District
Specific Plan / ILP Limited Industrial Precise Plan